

## Features



### Construction | Built to Last

The LP500 is constructed of galvanized steel with the highest quality durable powder-coat paint finish. Portability and ease of positioning are provided with moving handles and heavy-duty casters. Tie-down provisions allow for secure transportation to and from job sites.

### Quick Connects | When Time Matters

The LP500 features a set of fully-rated, industry exclusive Cam-Lok power connectors which are color coded for operator safety and ease-of-phase identification. Protective snap-back covers provide added safety during storage and operation.

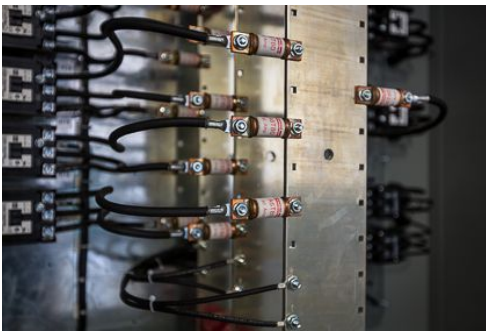


### PowerDyne™ | When Quality Matters

PowerDyne™ Resistors are the most rugged in the industry and can handle the rigors of over-the-road use. They are fully supported across their entire length within the air stream by stainless steel support rods which are insulated with heavy-duty, high-temperature ceramic insulators. Change in resistance is minimized by maintaining conservative resistor designs.

### Control Power

A detachable line cord is provided to deliver the convenient 120 Volt AC, 1-phase, 60 Hertz power necessary for control circuit operation. When 120 VAC control power is not readily available, units can be provided with a control power transformer.



### Cooling System

- Integrally mounted blower motor with high-performance, direct-driven fan blade delivers the required airflow volume (CFM) for cooling resistor load elements
- Motor circuit is short-circuit protected by current-limiting fuses and thermally protected by overload relays
- Dual Voltage units feature an operator Blower Voltage Selector switch.

### The LP500 Portable Load Bank

#### Rugged, portable design meets the demand of daily transit and testing.

The LP500 Portable Indoor Load Bank offers the most robust, high-capacity design in the industry. LBD is setting the standard with intelligent operator controls, safety indication layouts, adjustable load step resolution, and lightweight designs. The LP500 is the perfect solution for regularly scheduled maintenance testing and commissioning of mission-critical standby emergency power systems.

- > Industry-leading, robust, compact, lightweight design
- > Rated for continuous duty with no cool-down period
- > Quick-connect, color-coded Cam-Lok power connectors
- > Branch circuit fusing virtually eliminates catastrophic failure
- > Intelligent Safety Circuits, Indicators, and Operator Controls

### Digital Power Meter

A fully equipped, 3-phase Digital Power Metering System that measures a standard range of 16 load parameters. Includes RS485 (Modbus protocol) for remote reading - compatible with PC, PLC, and data loggers.



### Operator Protection | When Safety Matters

The LP500 comes equipped with an Emergency-Stop push button allowing the operator to take the unit off-line should a critical hard-stop condition occur. Branch circuit fuse protection provides short-circuit fault protection of all load steps eliminating the potential for catastrophic failure. Blower On, Motor Overload, Air-Flow Failure, and Over-temperature circuits disable all load steps during a fault condition with operator visual indicators, while a Wrong Voltage Applied protection circuit prevents the application of 480 VAC with the Load Voltage Selector switch in the 240 VAC position. The Load Dump circuit provides the operator visual indication if all load steps have been removed

### Operator Controls

- Emergency Stop (E-Stop)
- Illuminated Main Power On/Off switch
- Blower Voltage Selector switch
- Fan-Phase Reversal switch
- Load Voltage Selector switch (dual voltage units)
- Master Load On/Off switch
- Fault condition smart indicators
- Individual Load Step Switches



# Specs & Options

SPECIFICATIONS			
	LP500-240-480-10M	LP500-480-10M	LP500-600-10M
Capacity (kW)	500	500	500
Voltage (VAC, 3-Phase)	240/480	480	600
Load Type	Resistive	Resistive	Resistive
Amps per Phase (A)	1202/601	601	481
Load Step Resolution (kW)	10	10	10
Frequency (Hz)	60	60	60
Power Factor	1.0	1.0	1.0
Motor HP	5.0	5.0	5.0
Airflow CFM	15000	15000	15000
SPL dB(A)	82	82	82
Dimensions	33.5"W x 48.5"D x 62.5"H	33.5"W x 48.5"D x 62.5"H	33.5"W x 48.5"D x 62.5"H
Weight (lbs)	850	825	825

**Sound Pressure [SPL db(A)]** is all octave band frequencies at a distance of 10 feet using a propagation of 1/8 spherical. These are calculated values and should be used a guideline only.

**NOTE:** Specifications subject to change.

## OPTIONS

**Integral Control Power Transformer [T]** which delivers the necessary 120 Volt AC, 1-phase, 60 Hertz power required for control circuit operation. Control power transformer is wired to blower motor circuit and is primary and secondary fuse protected.

**Shipping Cage [LP300-700-CAGE]** - Heavy duty shipping cage offers transit protection and handling convenience, roll on/ roll out.

**Shipping Frame [LP300-700-FRAME]** - Heavy duty shipping frame offers transit protection and handling convenience, semi-permanent fixed frame.

