

Features



Construction | Built to Last

The LC100 is constructed of galvanized steel with the highest quality durable powder-coat paint finish. Portability and ease of positioning are provided with moving handle and optional travel case with casters.

Quick Connects | When Time Matters

The LC100 features a set of fully-rated, industry exclusive Cam-Lok power connectors which are color coded for operator safety and ease-of-phase identification. Protective snap-back covers provide added safety during storage and operation.

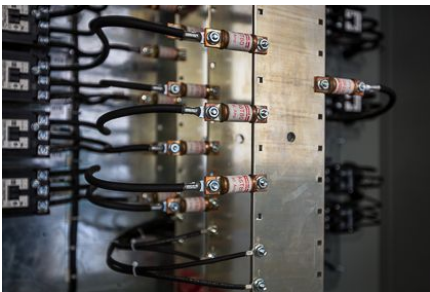


Compact & Lightweight | When Size Matters

The LC100 is one of the smallest true dual-voltage 100 kW load banks in the industry. At 69 lbs, it is ideal for those hard to reach tests or when it is not practical to dispatch multiple technicians for a test.

Control Power

A detachable line cord is provided to deliver the convenient 120 Volt AC, 1-phase, 60 Hertz power necessary for control circuit operation. When 120 VAC control power is not readily available, units can be provided with a control power transformer.



Cooling System

- Integrally mounted blower motors with high-performance, direct-driven fan blades deliver the required airflow volume (CFM) for cooling resistor load elements
- Blower motors operate at 120 VAC, 1-phase, 60 Hertz – line cord provided.
- Motor circuit is short-circuit protected by current-limiting fuses and thermally protected by overload relays
- Dual Voltage units feature an operator Blower Voltage Selector switch.

The LC100 Portable Load Bank

Rugged, compact design meets the demand of daily transit and testing.

The LC100 Portable Indoor Load Bank offers the most compact, high-capacity design in the industry. LBD is setting the standard with intelligent operator controls, safety indication layouts, adjustable load step resolution, and lightweight designs. The LC100 is the perfect solution for regularly scheduled maintenance testing and commissioning of mission-critical standby emergency power systems.

- > Industry-leading, robust, compact, lightweight design
- > Rated for continuous duty with no cool-down period
- > Quick-connect, color-coded Cam-Lok power connectors
- > Branch circuit fusing virtually eliminates catastrophic failure
- > Intelligent Safety Circuits, Indicators, and Operator Controls

Digital Power Meter

A fully equipped, 3-phase Digital Power Metering System that measures a standard range of 16 load parameters. Includes RS485 (Modbus protocol) for remote reading - compatible with PC, PLC, and data loggers.



Operator Protection and Controls | When Safety Matters

The LC100 comes equipped with branch circuit fuse protection which provides short-circuit fault protection of all load steps eliminating the potential for catastrophic failure. Blower On, Motor Overload, Air-Flow Failure, and Over-temperature circuits disable all load steps during a fault condition with operator visual indicators, while a Wrong Voltage Applied protection circuit prevents the application of 480 VAC with the Load Voltage Selector switch in the 240 VAC position. The Load Dump circuit provides the operator visual indication if all load steps have been removed

- Illuminated Main Power On/Off switch
- Load Voltage Selector switch (dual voltage units)
- Master Load On/Off switch
- Fault condition smart indicators
- Individual Load Step Switches

Travel Cases | Convenience and Protection

Optional heavy duty ATA cases are available, providing an excellent means of shipping and handling. The cases are constructed of rugged blue PVC laminate sides, cabinet grade birch wood and aluminum corner extrusions. Features include recessed latches, handles and casters, 1" foam lining and 5" bottom storage cavity.



Specs & Options

SPECIFICATIONS

	LC100-240-480-5M		
Capacity (kW)	100		
Voltage (VAC, 3-Phase)	240/480		
Load Type	Resistive		
Amps per Phase (A)	241/120		
Load Step Resolution (kW)	5		
Frequency (Hz)	60		
Power Factor	1.0		
Motor HP	0.67		
Airflow CFM	4000		
SPL dB(A)	78		
Dimensions	22"W x 22"D x 25"H		
Weight (lbs)	69		

Sound Pressure [SPL db(A)] is all octave band frequencies at a distance of 10 feet using a propagation of 1/8 spherical. These are calculated values and should be used as a guideline only.

NOTE: Specifications subject to change.

OPTIONS

Power Cables [CBL-PWR-25] Four 4/0 AWG Load Cables (1 per phase, 1 ground), 25' long. Black-Red-Blue-Green, color coded for safe and easy phase identification. Equipped with Cam-Lok connectors.

Travel Case [LC100-CASE] Custom travel case for LC100, Rugged Navy Blue PVC Laminate sides with aluminum edges, steel ball corners, foam lined, 4" casters and 5" deep storage cavity. Exterior dimensions are 17"Wx28"Dx33"H, weight is 32 pounds. Storage cavity is 16"Wx12"Dx5"H.

LBD Part Numbering System

