

CR1.8

1875 kVA Load Bank

The CR1.8 load bank is a 1875 kVA, 1500 kW, 1125 kVAR unit with the following features:

- Weather-tight construction that allows testing in all types of weather
- Excellent control options including a laptop computer or a hand-held controller
- Programmable testing with the option to record and save test data
- Fully adjustable power factor



Product Details

- Fully digital metering, complete with real-time data logging.
- Camlock “quick connect” connections for easy roll-out and roll-up of cables.
- Load step resolution:
 - Micro—1.67 kW/1.98 kVAR
 - KCS—10.0 kW/7.5 kVAR @ 0.8 Power Factor
- Forklift pockets are provided. The top and bottom twist-lock corner fittings can also be used for lifting and securing.
- Tests can be programmed in advance using the laptop or hand-held controller.
- CR1.8 load banks can be linked together with one control cable to work as one unit.

Great for Testing

Turbines
Switchgear
Rotary UPS
Generators
UPS Systems

Dimensions

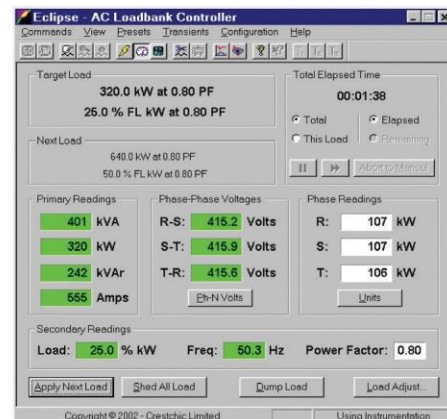
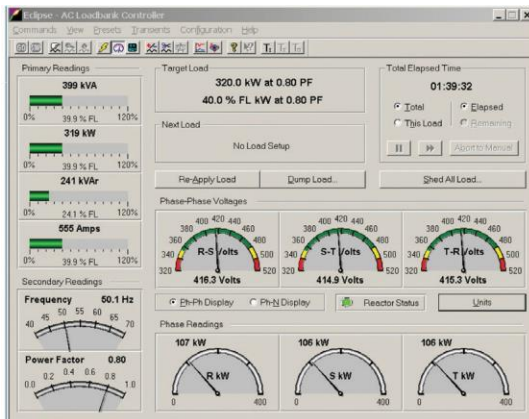
Length (243.8 cm) 96”
Width (190.5 cm) 75”
Height (259.1 cm) 102”
Weight (5897 kg) 13,000 lbs.

kVA	kW	Power Factor
1875	1500	0.8
1764	1500	0.85
1666	1500	0.9

LOAD BANK SPECIFICATIONS:

- **CONSTRUCTION:** The container is metal clad giving IP55 environmental protection and is of robust construction capable of enclosing and transporting the equipment without distortion or damage. The ISO type of construction complete with top and bottom Twist-lock corners make the units suitable for worldwide transport.
- **TEST SUPPLY:** 380-480V, 50/60Hz, 3-Phase, four-Wire
- **Auxiliary supply SUPPLY:** 380-480V, 50/60Hz, 3-Phase, 4-Wire
- **COOLING:** The resistor elements are cooled by fans which can be fed from the load bars or from an external auxiliary source either being selected by changeover switch.
- **CONTROLS/METERING:** The heart of the load bank control system is a proprietary single board computer (SBC) designed specifically for the purpose of load bank control. The control system requires the use of a PC or laptop computer running Crestchic 'Eclipse' and 'Transview' load bank control software. This software runs under the Microsoft Windows™ 95/98/ ME and Windows™ NT/2000 operating systems and utilizes this familiar environment to provide a user friendly graphical interface to the load bank control system.
- **SAFETY CIRCUITS:** The following protective devices are fitted into the load bank: Emergency Stop Button, Fan Failure, Airflow Failure, Over-temperature. Operation of any of these devices will remove all load.
- **WEIGHT:** L 1870 mm (6'), W 1905 mm (6.2'), H 2590 mm (8.5'), Weight: 4370 kgs (9630 lbs.).
- Ask about optional rental accessories for this unit.

SAMPLE CONTROL TERMINAL SCREENS:



Resistivo Inductivo

ventas@resistivoinductivo.com www.resistivoinductivo.com

Cal Power – Querétaro

Antiguo camino al carmen, 76246 El Marques, Qro.
+52 442 213 1500

Cal Power – Tijuana

Pacifico, 8961, Parque, Industrial Pacifico, IV, 22644 Tijuana, B.C.
+52 664 681 6234